

2024 Catalog



**We Build Your
*Chemical Program***

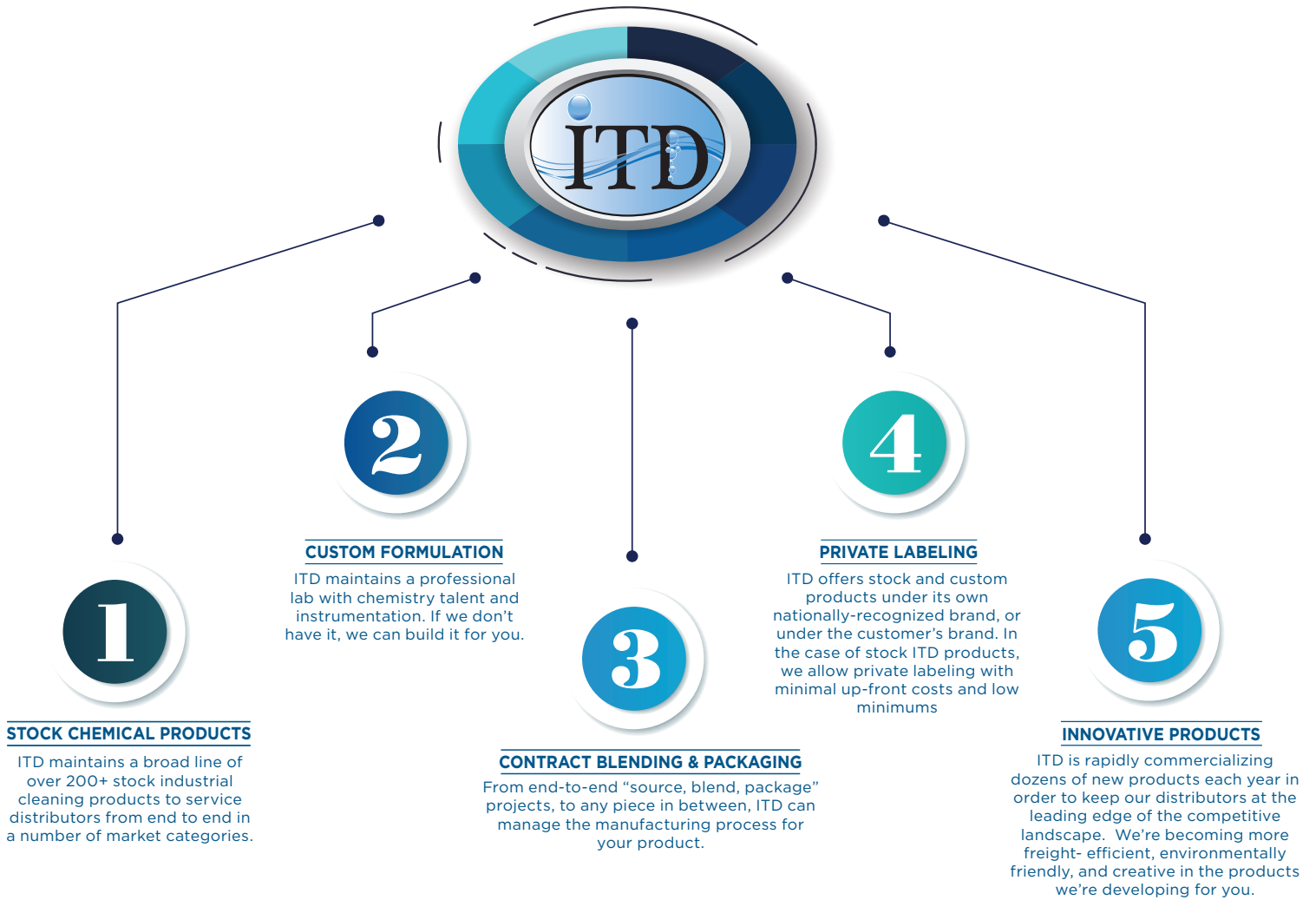


Formulator and manufacturer of industrial chemical solutions since 1996

SOLUTIONS

ITD maintains a broad line of industrial cleaners to service distributors from end to end in a number of market categories.

With over 250 stock products and hundreds of custom formulations, ITD has an answer for nearly every industrial cleaning application.



APPLICATORS, PACKAGING, CHEMICALS	3
CAR WASH & DETAILING	4
CONCRETE & ASPHALT.....	5
EXTERIOR MAINTENANCE	6-7
INDUSTRIAL DEGREASERS	8
JANITORIAL & SANITATION	9
KITCHEN & FOOD PROCESSING.....	10
LAUNDRY.....	11

PARTS CLEANERS & METAL PREPARATION.....	12
POOL	13
SOFT WASH	14
SPECIALTY INDUSTRIAL	15
TRUCK WASH - ACID.....	16
TRUCK WASH - ALKALINE	17
TRUCK WASH - TWO STEP.....	18
POLICIES - ORDERS/SHIPPING	19

It's our business to help you build your chemical program, and together we succeed

ITD provides various chemical applicators and empty packaging to support your unique distribution strategy. We also provide bulk raw chemical products, some of which are listed below. Inquire for further items and detail.

EQUIPMENT & APPLICATORS	
92000	Hydro-Mixer V4 Standard 1/2" (12 volt pumps 7 gpm and less)
92001	Hydro-Mixer V4 High Flow 3/4" (12 volt, booster, AODD 7-10 gpm)
92002	Hydro-Mixer XL (Gas powered pumps, Air pumps 10+gpm)
92003	Aluminum Cover for Hydro-Mixer
92004	Hydro-Mixer XXL (1" manifold + 1" metering valves for 15+ gpm)
PACKAGING	
800007	5 gallon Pail OT Natural U/N
800008	5 gallon Pail TH Black STEEL unlined U/N
800110	5 gallon blue T/H square pail
800157	Cap, 70/400 w/spout for 5 gal Blue square
800009	6 gallon Pail OT Natural
800068	Lid, Natural REG Flexspout (Nampac)
800069	Lid, Natural Flexspout U/N
800071	Lid, White UN Solid Terar TabRing
800017	Box, 12 x 12 x 12
800018	Box 12.5 x 12.5 x 18.5
800021	Box, 7 x 7 x 12
800048	Drum, 15 gallon Natural Plastic
800049	Drum, 20 gallon Natural Tight Head U/N
800051	Drum, 30 gallon Plastic
800054	Drum, 55 gallon Poly OT Drum
800055	Drum, 55 gallon White Poly TH Drum (Recon)
800056	Drum, 55 gallon Blue Poly TH Drum (Recon)
800058	Drum, 55 gallon NEW (Blue or White)
800100	Drum Safety Seals, 2" plastic
800025	Bung, Coarse (Buttress) w/ Gasket
800026	Bung, Fine Thread w/ Gasket
800043	Drum Adaptor, AM-464 Buttress
800045	Drum Siphon Pump
800046	Drum Wrench
800037	Quart Round 32 oz. Natural 28/400
800039	Pint Round 16 oz. HDPE White 28/400
800101	Quart/Pint Sprayer, 28/400
800030	Cap, 28/400 White Foam Lined
800061	Gallon jug Natural 1 Each (Qty of 4) UN 130 GR in Box
800062	Gallon jugs (bulk) UN 130 GR
800064	Gallon Jug Fluorinated 4X1 UN Level 4

800031	Cap, 38/400 White Foil Heat Seal
800032	Cap, 38/400 White Child Resistant
800121	Cap, 38/400 Heat Seal White Child Resistant
800152	Bottle 128 oz Natural F-style
800161	2.5 Gal Natural HDPE F Style Bottle
800162	Cap, White for 2.5 Gal Natural HDPE F Style Bottle
800097	Product Label - Printed
800065	Hazard Label - Corrosive
800066	Hazard Label - Flammable
800067	Hazard Label - Toxic
800126	Label - Limited Quantity
800172	275 gallon Tote w/ ball valve
800148	330 gallon Tote w/ ball valve
800135	Cap, for Totes (275-330 gallon)
RAW CHEMICAL (SOLD BY THE POUND / PACKAGING SEPARATE)	
900017	Berol LCD
900025	Caustic Potash 45% solution
900026	Caustic Soda 50% solution
900027	Caustic Soda Beads
900041	DBSA
900039	D'Limonene
900274	DMDM Hydantoin (Preservative)
900068	EDTA
900080	Fragrance, Cherry
900090	Fragrance, Lemon
900108	Glycol Ether EB
900117	Isopropanol 99%
900265	Lactic Acid 88%
900147	Oxalic Acid
900206	Phosphate Ester 600
900159	Propylene Glycol (Kosher)
900171	Soda Ash (LITE)
900177	Sodium Hypochlorite (Bleach)
900178	Sodium Metasilicate (Anhy)
900183	Sodium Percarbonate
900201	Sodium Xylene Sulfonate
900221	Trisodium Phosphate (Crystal)



From in-bay automatic solutions
to niche detailing products, our car wash lineup is deep

PREMIUM CAR
WASH SOAP



High Foam Cherry 38810

Will Not Remove Waxes
High Foam Profile
Cherry Scent

Color	Odor	pH	Physical State	DOT	Dilution
Pink	Cherry	6.78	Liquid	Not Regulated	Concentrate

HAND CAR
WASH SOAP



Wash & Wax 31110

Concentrated
High Foaming
High Gloss

Color	Odor	pH	Physical State	DOT	Dilution
Pink	Odorless	6.5-8.5	Liquid	Not Regulated	Concentrate

SOLVENT
TIRE SHINE



Blue Shine 38970

Extreme high shine
Long-lasting

Color	Odor	pH	Physical State	DOT	Dilution
Blue	Characteristic	N/A	Liquid	Hazardous	Ready to Use

CAR WASH
POLYMER WAX



Wet Wax (sc) 38210

Safe To Use
Encourages Glossy Surface
Improves Sheeting And Drying Time

Color	Odor	pH	Physical State	DOT	Dilution
Amber	Lemon	5-7	Liquid	Not Regulated	Concentrate

SKU	NAME	CATEGORY	COLOR	ODOR	pH	PHYSICAL STATE	DOT	DILUTION
16223	Bay Wash	Tunnel Wash & Descaler	Light Straw	None	<1	Liquid	Hazardous	Super Concentrate
22444	Bug Thriller	Bug Remover & Vehicle Cleaner	Pink	Ammonia	12.0-12.5	Liquid	Not Regulated	Concentrate
38275	Clear Coat Protectant	Clear Coat Protectant	Blue	Raspberry	6.0 - 8.0	Liquid	Not Regulated	Concentrate
22210	Fiber Klean	Fabric & Carpet Cleaner	Light Straw	Soap like	8.5 - 9.5	Liquid	Not Regulated	Concentrate
38910	Foamy Brush Car Wash	Premium Car Wash Soap	Red, Blue, Yellow	Cherry, Grape, Banana	9	Liquid	Not Regulated	Concentrate
16413	Foamy Low pH Pre Soak	Low pH Pre Soak	Blue	Acerbic	< 1	Liquid	Hazardous	Concentrate
33030	Foamy Tire Cleaner	Alkaline Tire Cleaner	Green	Odorless	13+	Liquid	Hazardous	Concentrate
21239	High pH Pre Soak	Aggressive Car Wash Soap	Straw	Characteristic	12.8-13.5	Liquid	Hazardous	Concentrate
38920	High Pressure Car Wash	Premium Car Wash Soap	Red	Lemon	>=13	Liquid	Not Regulated	Concentrate
12600	Power Punch	Alkaline Car Wash Soap	Green	Lemon	13 - 14	Liquid	Not Regulated	Concentrate
12601	Power Punch Plus Wax	Alkaline Car Wash Soap + Carnauba Wax	Green	Lemon	13 - 14	Liquid	Not Regulated	Concentrate
38240	Quick Dry	Rinse Aid + Sheeting Agent	Light Straw	Odorless	6	Liquid	Not Regulated	Concentrate
38300	Shield & Shine	Carnauba Wax + Surface Protectant + Waterless Cleaner	Straw	Banana	5	Liquid	Not Regulated	Super Concentrate
32000	SoSoft	Water Conditioner + Softener	Clear	Characteristic	13.5+	Liquid	Not Regulated	Super Concentrate
38950	Tire Dressing High Gloss	Solvent-Free Tire Shine	White	Odorless	5	Liquid	Not Regulated	Ready to Use
38960	Tire Dressing Non Silicone	Non-Silicone Tire Shine	Blue	Characteristic	5.6	Liquid	Not Regulated	Ready to Use
39810	Vinyl Dressing	Premium Vinyl Protectant	White	Characteristic	6-8	Liquid	Not Regulated	Ready to Use
22100	Vinyl Interior Cleaner	Interior Detail Cleaner	Light Straw	Characteristic	6-8	Liquid	Not Regulated	Ready to Use
33010	White Wall Tire Cleaner (W.W.T.)	Alkaline Tire Cleaner	Green	Odorless	>=13	Liquid	Hazardous	Concentrate
68130	Windshield Washer Fluid (summer)	Windshield Washer Fluid	Blue	Characteristic	10	Liquid	Not Regulated	Super Concentrate
68144	Winter Windshield Washer	Anti-Freeze Washer Fluid	Blue	Alcohol	10.7-11.2	Liquid	Hazardous	Super Concentrate



From preventing it from sticking to removing it once it's stuck, ITD has the market leading products you need to compete in this attractive segment

**SAFE
CONCRETE
REMOVER**

Break Down 25800

- Does not contain muriatic acid
- Contains corrosion inhibitors
- Environmentally friendly
- Highly dilutable
- Paint and metal safe
- High foam



Color	Odor	pH	Physical State	DOT	Dilution
Amber	Odorless	<2	Liquid	Hazardous	Super Concentrate

**MINERAL OIL-BASED
CONCRETE RELEASE
AGENT**

Easy Crete Release 75450

- Improves release of formwork
- Reduces buildup on formwork
- Reduces cleaning of formwork
- Leaves no residue, stain or discoloration
- Mineral oil base
- Non-evaporative, long-lasting formula



Color	Odor	pH	Physical State	DOT	Dilution
Amber	Odorless	N/A	Liquid	Not Regulated	Ready to Use

**WATER-BASED
ASPHALT
RELEASE**

Slip Soap 74900

- Safe, non-toxic formula
- No harsh solvents
- Highly dilutable



Color	Odor	pH	Physical State	DOT	Dilution
Blue	Characteristic	7-8	Liquid	Not Regulated	Super Concentrate

**AGGRESSIVE
CONCRETE
REMOVER**

Super Crete-X-W 25180

- Contains corrosion inhibitors
- Contains a spray wax finish
- Highly dilutable. Paint and metal safe



Color	Odor	pH	Physical State	DOT	Dilution
Straw	Acerbic	<=1	Liquid	Hazardous	Super Concentrate

SKU	NAME	CATEGORY	COLOR	ODOR	pH	PHYSICAL STATE	DOT	DILUTION
28132	CitraTar	Citrus Asphalt Remover	Straw	Citrus	N/A	Liquid	Hazardous	Ready to Use
75000	Drag Slat Cleaner	Economy Asphalt Remover	Clear	Characteristic	N/A	Liquid	Not Regulated	Ready to Use
90170	OJ Soyester	Solvent Citrus + Soy Asphalt Dissolver	Orange	Citrus	N/A	Liquid	Not Regulated	Ready to Use
25900	Phos-Clean	Daily Ready Mix Truck Cleaner	Yellow	Odorless	<2	Liquid	Hazardous	Super Concentrate
75100	SM100	High Flash Asphalt Release & Remover	Amber	Odorless	N/A	Liquid	Not Regulated	Ready to Use



ITD's bread and butter, we have products to clean every exterior surface in the residential and commercial worlds.

WOOD CLEANER AND RESTORER

Deck Brite 41640
Restores wood surfaces
Safe to use



Color	Odor	pH	Physical State	DOT	Dilution
Clear	Characteristic	<3	Liquid	Not Regulated	Concentrate

PREMIUM GUTTER CLEANER

Gutter Brite 62250
Tackles tough black streak
Highly concentrated
Will not remove paint



Color	Odor	pH	Physical State	DOT	Dilution
Green	Odorless	13	Liquid	Not Regulated	Concentrate

EFFLORESCENCE REMOVER

Erase 62500
Removes efflorescence
No harsh acids
Preps surface for sealer process



Color	Odor	pH	Physical State	DOT	Dilution
Aqua Blue	Odorless	<2	Liquid	Hazardous	Concentrate

PROFESSIONAL GRADE RUST STAIN REMOVER

Rust Pro 61377
No Surface Preparation Needed
Works on Battery Acid Stains



Color	Odor	pH	Physical State	DOT	Dilution
Olive Green	Odorless	<=1	Liquid	Hazardous	Ready to Use

SKU	NAME	CATEGORY	COLOR	ODOR	pH	PHYSICAL STATE	DOT	DILUTION
61000	BioBarrier	Safe Exterior Cleaner and Protectant	Clear	Characteristic	6-7	Liquid	Not Regulated	Ready to Use
29600	Citrus X-terior Cleaner	Economy Exterior Surface Cleaner	Orange	Citrus	12.5-13.5	Liquid	Not Regulated	Concentrate
28110	Concrete Cleaner	Economy Concrete Cleaner	Green	Odorless	>13	Liquid	Hazardous	Concentrate
22521	Deck Stripper	Paint & Stain Remover	Clear	Odorless	>=13	Liquid	Hazardous	Super Concentrate
62400	Deck Stripper Powder	Powdered Paint & Stain Remover	White Powder	Odorless	N/A	Powder	Hazardous	N/A
62750	EFF-X	Heavy Duty Efflorescence Remover	Clear	Strong	<=1	Liquid	Hazardous	Concentrate
62550	EZ Lift	Sidewalk Cleaner + Gum & Sap Remover	Green	Odorless	>13	Liquid	Hazardous	Ready to Use
62050	Face Away	Smooth Surface Graffiti Remover	Orange	Characteristic	2-3	Liquid	Not Regulated	Ready to Use
62450	Hot Powder Concrete Cleaner	Heavy-Duty Concrete Floor Cleaner	White Powder	Odorless	N/A	Powder	Hazardous	N/A
11131	House Brite	All-Purpose Exterior Cleaner	Green	Characteristic	12.7 - 13.6	Liquid	Not Regulated	Concentrate



**POROUS SURFACE
GRAFFITI REMOVER**

Mark Shark 62060

Removes Graffiti Paint
From Porous Masonry Surfaces
Water-Based
Works In 10 Minutes



Color	Odor	pH	Physical State	DOT	Dilution
Dark Red	Characteristic	>=13	Liquid	Hazardous	Concentrate

**MORTAR SPLATTER
REMOVER**

Pro 80 25181

Buffered acid formulation - low fuming
Safe on glass and aluminum frames



Color	Odor	pH	Physical State	DOT	Dilution
Clear	Strong	<=1	Liquid	Hazardous	Concentrate

**PREMIUM MASONRY
CLEANER**

Pro Cleanse BC 22531

Premium Concrete Cleaner
Removes Oil Stains
Brushless Oxidation Removal
Highly Concentrated
Free-Rinsing



Color	Odor	pH	Physical State	DOT	Dilution
Light Straw	Orange	>=13	Liquid	Hazardous	Super Concentrate

**MULTI-SURFACE
RESTORATION CLEANER**

ProRestore 21 16335

Buffered acid formulation - low fuming
Safe on glass and aluminum frames
Premium restoration cleaner



Color	Odor	pH	Physical State	DOT	Dilution
Straw	Characteristic	<=3	Liquid	Hazardous	Concentrate

SKU	NAME	CATEGORY	COLOR	ODOR	pH	PHYSICAL STATE	DOT	DILUTION
25260	Mud Away	Red Clay Stain Remover	Red	Odorless	<=1	Liquid	Hazardous	Concentrate
16330	Pro BRC	Economy Building Restoration Cleaner	Clear	Acerbic	<=1	Liquid	Hazardous	Concentrate
38400	ResiGuard	Exterior Surface Protectant	Straw	Banana	5-6	Liquid	Not Regulated	Super Concentrate
41680	Resi-Rust	Safe Rust Stain Remover	Clear	Characteristic	<3	Liquid	Not Regulated	Ready to Use
22528	Shingle Ripper	Heavy Duty Roof Cleaner	Clear	Characteristic	>13	Liquid	Hazardous	Concentrate
62010	So Safe	Powdered Wood + Deck Cleaner	White Powder	Odorless	N/A	Powder	Hazardous	N/A
22548	Super Stripper super conc. (sc)	Coating Stripper	Clear	Odorless	13+	Liquid	Hazardous	Super Concentrate
60770	Wood Brightener	Powdered Wood + Deck Cleaner	White Powder	Characteristic	N/A	Powder	Hazardous	N/A
18770	XMO 21 - Asphalt	Waterless Asphalt Cleaner	Dark Grey Powder	Characteristic	N/A	Powder	Not Regulated	N/A
18764	XMO 21 - Concrete	Concrete Cleaner & Hardener	Light Grey Powder	Odorless	9.65	Powder	Not Regulated	N/A



ITD has the most concentrated, effective and high quality degreasers on the market, period

SUPER CONCENTRATED BUTYL CAUSTIC DEGREASER

Big Dog 22525

Super Concentrated cleaner/degreaser
Butyl + Caustic formulation
Great on heavy equipment
No phosphates



Color	Odor	pH	Physical State	DOT	Dilution
Dark Red	Characteristic	12.0 - 13.5	Liquid	Hazardous	Super Concentrate

ALL PURPOSE CLEANER + DEGREASER

BD-6 22220

All Purpose cleaner / degreaser
Butyl + non-caustic formulation
Multi-surface cleaner for industrial use
No phosphates
USDA approved



Color	Odor	pH	Physical State	DOT	Dilution
Green	None	12.96	Liquid	Not Regulated	Concentrate

HEAVY DUTY CAUSTIC DEGREASER

Wild Dog 22510

Heavy duty cleaner / degreaser
Caustic + non-butyl formulation
Super Concentrated
Great on heavy equipment
No phosphates
USDA approved



Color	Odor	pH	Physical State	DOT	Dilution
Light Red	Odorless	13+	Liquid	Hazardous	Super Concentrate

WATER-BASED CITRUS DEGREASER

Citro Solv II 24113

High quality water-based citrus cleaner
Citrus solvent for deep penetration
No phosphates



Color	Odor	pH	Physical State	DOT	Dilution
Straw	Odorless	12.8-13.50	Liquid	Not Regulated	Super Concentrate

SKU	NAME	CATEGORY	COLOR	ODOR	pH	PHYSICAL STATE	DOT	DILUTION
22410	BD-6 MAX	All Purpose Cleaner + Degreaser	Yellow	Butyl	13	Liquid	Not Regulated	Super Concentrate
22800	Bulldog	Heavy Duty Butyl Caustic Degreaser	Yellow	None	13	Liquid	Hazardous	Super Concentrate
22295	Charger	Non-caustic Drum-in-a-Box Degreaser	Violet	Odorless	>=13	Liquid	Hazardous	Super Concentrate
28130	Citrus Degreaser	Natural Solvent Degreaser	Clear	Citrus	N/A	Liquid	Hazardous	Ready to Use
61410	Dyn-a-Coil Detergent Additive	Scale Prevention Additive	Clear	Odorless	6-8	Liquid	Not Regulated	Concentrate
71162	Nature's Green APC	All Purpose Safe Cleaner	Green	Characteristic	6-8	Liquid	Not Regulated	Concentrate
22290	Raider	Caustic Drum-in-a-Box Degreaser	Blue	Odorless	>=13	Liquid	Hazardous	Super Concentrate
22523	Rite Stuff	Economy Butyl Caustic Degreaser	Violet	Odorless	12.8-13.6	Liquid	Hazardous	Concentrate
22270	SoSimple	All Purpose Cleaner + Degreaser	Green	Sassafras	9	Liquid	Not Regulated	Concentrate
27110	Striker	Butyl Caustic Degreaser	Yellow	None	12.5-13.5	Liquid	Hazardous	Concentrate
12300	White Wash	Multi-Surface Alkaline Cleaner	Clear	Odorless	12.5+	Liquid	Not Regulated	Concentrate

ITD is equipped with the best in JanSan, including enzymatic cleaners, deodorizers, floor cleaners, and all the odds & ends you need

QUAT CLEANER & DEODORIZER

Quat Wash 91010
 Cleaner & Deodorant
 Dumpsters/Trash Cans
 Porta-Potties
 Shipping Containers
 Parts Cleaner Cabinets
 Livestock Trailers
 Fresh Wintergreen Scent



Color	Odor	pH	Physical State	DOT	Dilution
Blue	Winter-green	5 - 6	Liquid	Not Regulated	Concentrate

PROFESSIONAL GRADE ODOR MANAGER

Odor Neutralizer (sc) 41491

Odor eliminator & mask
 Highly dilutable
 Safe and easy to use
 Pleasant wintergreen scent



Color	Odor	pH	Physical State	DOT	Dilution
Light Straw	Odorless	7.63	Liquid	Not Regulated	Super Concentrate

MICROBIAL DRAIN CLEANER & ODOR MASK

QwicZyme 25112
 Microbial product
 Odor eliminator & mask
 Safe and easy to use
 Pleasant wintergreen scent



Color	Odor	pH	Physical State	DOT	Dilution
Light Straw	n. gamma	6.5-7.5	Liquid	Not Regulated	Concentrate

GLASS CLEANER

Shimmer 68110

Biodegradable Surfactants
 Super Concentrated
 USDA-Approved



Color	Odor	pH	Physical State	DOT	Dilution
Dark Blue	Blue Breeze	9 - 11	Liquid	Not Regulated	Super Concentrate

SKU	NAME	CATEGORY	COLOR	ODOR	pH	PHYSICAL STATE	DOT	DILUTION
21320	Arctic Circle (-30)	Freezer Floor Cleaner (-30)	Blue	None	6 - 8	Liquid	Not Regulated	Concentrate
21350	Arctic Circle (-50)	Freezer Floor Cleaner (-50)	Blue	Mint	6 - 8	Liquid	Not Regulated	Concentrate
90004	Brite	Toilet Bowl Cleaner	Pink	Wintergreen	< 1	Liquid	Hazardous	Ready to Use
16922	Ceramic Tile and Grout Cleaner	Ceramic Tile and Grout Cleaner	Light Straw	Lemon	<=2	Liquid	Hazardous	Concentrate
41xxx	Cherry / Lemon / Cinammon conc	Odor Masks of Various Scents	Various	Various	6 - 8	Liquid	Not Regulated	Super Concentrate
19050	Citro-Bella	Eco-Friendly Odor Control & Insect Repellent	Straw	Citronella	N/A	Powder	Not Regulated	N/A
28133	Citrus Flush	Drain & Lift Station Cleaner	Clear	Citrus	N/A	Liquid	Hazardous	Ready to Use
51085	Click Hand Soap	Lotionized Hand Soap	Red	Fresh & Clean	6 - 8	Liquid	Not Regulated	Concentrate
26112	Drain Opener	Commercial Grade Drain Cleaner	Light Red	Odorless	>13	Liquid	Hazardous	Ready to Use
28400	Guard Dog	Powdered Shop Floor Cleaner	Yellow Green Powder	Citrus	N/A	Powder	Not Regulated	N/A
63000	Hand Soap	Concentrated Premium Hand Soap	Light Straw	Fresh and Clean	6 - 8	Liquid	Not Regulated	Concentrate
22330	Max Floor	Low Foam Heavy Duty, Non-Caustic Floor Cleaner	Green	Amine	12 - 13	Liquid	Not Regulated	Concentrate
22340	Neutral Floor	Low Foam Neutral pH Floor Cleaner	Green	None	8.5 - 9.5	Liquid	Not Regulated	Concentrate
22320	Neutral Scrub (Box Drum Kit)	Low Foam Sensitive Floor Scrubber Detergent	Blue	None	10 - 11	Liquid	Not Regulated	Super Concentrate
27300	Ol' Yeller	Premium Powdered Shop Floor Cleaner	Yellow Powder	Citrus	N/A	Powder	Not Regulated	N/A
22310	Power Scrub (Box Drum Kit)	Low Foam Heavy Duty Floor Scrubber Detergent Kit	Red	None	13 - 14	Liquid	Hazardous	Super Concentrate



From the kitchen to the meat processing line and everything in between, ITD is rapidly developing a broad line of quality detergents

OVEN & GRILL CLEANER

Oven & Grill Cleaner 26113

Great for tough burnt deposits in ovens and grills
Effective against Asian food stains
Viscous formula for maximum cling



Color	Odor	pH	Physical State	DOT	Dilution
Amber	Odorless	>=13	Liquid	Hazardous	Concentrate

COMMERCIAL KITCHENWARE DETERGENT

Pot & Pan 38930

Safe on hands
Long-lasting foam
Performs in hard water



Color	Odor	pH	Physical State	DOT	Dilution
Blue	Raspberry	6 - 8	Liquid	Not Regulated	Concentrate

CHLORINATED FOAMING CLEANER

ChlorFoam 10050

Chlorinated cleaning solution
High foam generation
Highly dilutable
Perfect for Food, Dairy, and Beverage Processing Equipment



Color	Odor	pH	Physical State	DOT	Dilution
Clear	Bleach	12-13	Liquid	Hazardous	Super Concentrate

COMMERCIAL HOOD CLEANER

Hood Cleaner 26110

Great for tough burnt deposits
Effective against Asian food stains
Highly dilutable
USDA approved formula



Color	Odor	pH	Physical State	DOT	Dilution
Light Red	Odorless	13 - 14+	Liquid	Hazardous	Super Concentrate

SKU	NAME	CATEGORY	COLOR	ODOR	pH	PHYSICAL STATE	DOT	DILUTION
16580	A100	Foaming Stainless Steel Surface Cleaner & Descaler	Clear	None	1 - 2	Liquid	Hazardous	Concentrate
53006	Bleach Solution 6%	6% Bleach Solution	Clear	Bleach	13 - 14	Liquid	Hazardous	Concentrate
72220	CIP Caustic Solution	Draft Line & Food Process Equipment Cleaner	Straw	None	13+	Liquid	Hazardous	Super Concentrate
21236	Denaturant Green	Green Denaturing Solution	Green	None	6 - 8	Liquid	Not Regulated	Concentrate
72620	Dish Dry	Warewash Drying Agent	Green	None	2 - 3	Liquid	Not Regulated	Concentrate
72600	Glass Attack	Machine Glassware Detergent	Clear	None	13 - 14	Liquid	Hazardous	Concentrate
72640	Lime Remover	Lime & Scale Remover	Yellow	None	0 - 2	Liquid	Not Regulated	Concentrate
72610	Machine Klene	Machine Warewash Detergent	Red	None	13 - 14	Liquid	Hazardous	Concentrate
23010	Smoke House Cleaner	Economy Commercial Kitchen Surface Cleaner	Straw	Odorless	12 - 13.5	Liquid	Hazardous	Super Concentrate
72630	Tableware Presoak	Tableware Presoak	Clear	None	13 - 14	Liquid	Hazardous	Concentrate

ITD's broad laundry line will make you a one-stop shop for commercial cleaners or industrial laundry customers

ECONOMICAL LIQUID LAUNDRY DETERGENT (TOP LOAD)

2x Liquid Laundry Detergent 82132

Top load detergent
Economical



Color	Odor	pH	Physical State	DOT	Dilution
Blue	Tide-Like	10.8-11.8	Liquid	Not Regulated	Concentrate

PREMIUM SPOTTER & DETERGENT

SCAT! 80026

Non-Hazardous — Use on Wet or Dry Sides. Highly Effective on Food, Beverage, Protein, Grease, Oil, Make-Up. Doubles As Laundry Detergent



Color	Odor	pH	Physical State	DOT	Dilution
Clear	Fresh & Clean	2.0-3.0	Liquid	Not Regulated	Concentrate

PREMIUM POWDERED DETERGENT

Red 80007

All-In-One Detergent
100% ACTIVE
Added Collar Emulsifier



Color	Odor	pH	Physical State	DOT	Dilution
White Powder	Characteristic	N/A	Powder	Not Regulated	N/A

PREMIUM POWER HIGH-ALKALINE SYSTEM

Prestige 80005

Superior Built Detergent
100% ACTIVE. Works in Hot or Cold
Requires Sour



Color	Odor	pH	Physical State	DOT	Dilution
White Powder	None	N/A	Powder	Hazardous	N/A

SKU	NAME	CATEGORY	COLOR	ODOR	pH	PHYSICAL STATE	DOT	DILUTION
82131	2X Liquid Laundry Detergent H.E.	Economical Liquid Laundry Detergent (Front Load)	Blue	Tide-Like	12.5	Liquid	Not Regulated	Concentrate
80024	Allure	All Stain Pre-spotter	Yellow	Fresh & Clean	3 - 4	Liquid	Hazardous	Concentrate
81286	Bandit	Liquid Laundry Degreaser	Light Straw	Wintergreen	12.5-14	Liquid	Not Regulated	Concentrate
80015	Buck	Economical Buffered Sour	White Powder	None	N/A	Powder	Hazardous	N/A
80025	Economite	Oil & Grease Pre-Spotter	Light Straw	Solvent	N/A	Liquid	Not Regulated	Concentrate
80030	Mineral Oil	Silk Treatment	Clear	Solvent	N/A	Liquid	Not Regulated	Ready to Use
80020	Mist	Powdered Starch	White Powder	Characteristic	N/A	Powder	Not Regulated	N/A
80011	Pearl	20% Dry Chlorine Bleach	White Powder	Bleach	N/A	Powder	Not Regulated	N/A
80006	Rave Plus	Economical Complete Powder	Straw	Fresh & Clean	N/A	Powder	Not Regulated	N/A
80027	Solv-All	Protein Stain Eliminator	Yellow	None	2-3	Liquid	Not Regulated	Concentrate
80028	Stand-By	Silk Spotter	Light Straw	None	N/A	Liquid	Not Regulated	Concentrate
80029	Tannaid	General Stain Remover	Light Straw	None	2.1	Liquid	Not Regulated	Concentrate
80031	TLC	Collar & Cuff Liquid Detergent	Light Straw	Characteristic	7 - 9	Liquid	Not Regulated	Concentrate



From parts washer detergents to phosphatizers to manual cleaners, we have the answers to your parts cleaning and preparation needs

LOW RESIDUE PARTS CLEANER

Low Residue Parts Cleaner 28257

- Residue-free finish
- Safe on electric motors, diesel injectors, chrome, and hydraulics
- Biodegradable
- Non-foaming formulation
- No phosphates
- Corrosion inhibiting

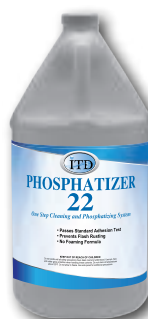


Color	Odor	pH	Physical State	DOT	Dilution
Clear	Odorless	>13	Liquid	Not Regulated	Concentrate

PREMIUM METAL CLEANER & PHOSPHATIZER

Phosphatizer 22 72020

- Passes Standard Adhesion Test
- Prevents Flash Rusting
- No Foaming Formula



Color	Odor	pH	Physical State	DOT	Dilution
Clear	Odorless	2.17	Liquid	Not Regulated	Concentrate

CORROSION INHIBITOR

Rust Inhibitor LV 66500

- Effective in liquid and vapor phases
- Protects parts and cabinets



Color	Odor	pH	Physical State	DOT	Dilution
Light Straw	Characteristic	10	Liquid	Not Regulated	Concentrate

PREMIUM ALL PURPOSE PARTS CLEANER

Gold Rush SMS 29020

- Great for parts washer cabinets
- Soft metal safe formulation
- Contains corrosion inhibitors
- Contains 2 organic solvents for maximum penetration



Color	Odor	pH	Physical State	DOT	Dilution
White Powder	Citrus	N/A	Powder	Not Regulated	N/A

SKU	NAME	CATEGORY	COLOR	ODOR	pH	PHYSICAL STATE	DOT	DILUTION
27325	All Purpose Gold	Soft Metal Safe Parts Cleaner	Orange Powder	Citrus	N/A	Powder	Not Regulated	N/A
29000	All Purpose Parts Cleaner	Economy All Purpose Parts Cleaner	Light Straw	Odorless	N/A	Powder	Not Regulated	N/A
94198	Bio Petro 54X	Biologically Active Parts Sink Compound	White	Characteristic	6-8	Liquid	Not Regulated	Concentrate
50000	Defoamer 3x	Defoaming Additive	White	Characteristic	6-8	Liquid	Not Regulated	Concentrate
24000	Iron Blaster	Hot Vat & Jet Spray Powder	White Powder	Odorless	N/A	Powder	Hazardous	N/A
27330	Manual Parts Cleaner NPH	Safe Manual Parts Cleaner	Light Straw	Orange Citrus	8.5	Liquid	Not Regulated	Concentrate

ITD's broad pool line will make you a one-stop shop for all commercial and residential pool maintenance contractors

WINTER POOL MAINTAINER

Savior 90009

Provides clean & sparkling pool water during winter
Non-corrosive • Safe for swimmers



Color	Odor	pH	Physical State	DOT	Dilution
Clear	None	7.8	Liquid	Not Regulated	Concentrate

POOL ALGAE CLEANER

Bye Slime 90008

Removes unwanted Algae from Pools
Easy to use



Color	Odor	pH	Physical State	DOT	Dilution
Dark Blue	None	3.83	Liquid	Not Regulated	Concentrate

POOL CLARIFIER

Crystal Clear 90007

Concentrated & Fast Acting
Clears Up Cloudy Pools Overnight



Color	Odor	pH	Physical State	DOT	Dilution
Dark Blue	None	6.5 -7.5	Liquid	Not Regulated	Concentrate

POOL WINTERIZER

Hibernator 90016

Use when closing down pools
Eliminates need to drain pool



Color	Odor	pH	Physical State	DOT	Dilution
White	Characteristic	N/A	Powder	Not Regulated	N/A

SKU	NAME	CATEGORY	COLOR	ODOR	pH	PHYSICAL STATE	DOT	DILUTION
22280	Chair Care	Pool Furniture Cleaner & Protector	Light Straw	Characteristic	9 - 10	Liquid	Not Regulated	Concentrate
90006	Crush	Oxidizer and Shock Avoider	White Powder	Characteristic	N/A	Powder	Hazardous	N/A
90001	Hard Ball	Water Hardener	Blue Powder	None	5 - 8	Powder	Not Regulated	N/A
90003	Low Down	Liquid pH Reducer	Light Straw	None	<=2	Liquid	Not Regulated	Concentrate
90015	Metal Manager - Non-Salt	Non-salt Pool Metal Stain & Corrosion Control	Light Straw	None	<=2	Liquid	Hazardous	Concentrate
90010	Metal Manager - Salt	Salt Pool Metal Stain & Corrosion Control	Light Straw	None	<=2	Liquid	Not Regulated	Concentrate
90000	pH Booster	Alkalinity Increaser	Blue Powder	None	N/A	Powder	Not Regulated	N/A
90014	pH Reducer	pH Reducer	Clear	Characteristic	N/A	Powder	Not Regulated	N/A
90002	Rise Up	Liquid pH Booster	Light Straw	None	>13	Liquid	Hazardous	Concentrate
90017	Rush	Filter Cleaner & Degreaser	Light Straw	None	<=1	Liquid	Hazardous	Concentrate
90020	Stain Drain	Pool Stain Remover	Light Straw	Characteristic	2.5	Powder	Not Regulated	N/A
16227	Straight Clean	Pool Cleaner & Renovator	Green	Acerbic	<1	Liquid	Hazardous	Concentrate
90004	Tile Brite	Pool Tile Cleaner	Pink	None	<=1	Liquid	Hazardous	Concentrate
90005	UV Mirror	Chlorine Extender	White Powder	None	N/A	Powder	Not Regulated	N/A



ITD leads the way in the soft wash detergent category.
Our broad line of additives, neutralizers and markers are detailed below.

BLEACH NEUTRALIZER

Neutra Bleach 53120

Easy to use
 Prevents damage to surfaces & equipment
 Highly dilutable
 Contains corrosion inhibitors



Color	Odor	pH	Physical State	DOT	Dilution
Blue	Odorless	9.30	Liquid	Not Regulated	Concentrate

APPLE SCENTED BLEACH MARKER

Track Man 53053

Apple Scented
 Odor Mask
 Red Colored Guide
 Bleach Surfactant



Color	Odor	pH	Physical State	DOT	Dilution
Dark Red	Apple	8.5	Liquid	Not Regulated	Concentrate

PINE SCENTED PREMIUM BLEACH ADDITIVE

Green Machine 53150

Super Concentrated
 Superior Masking Capability
 Enhanced Detergency
 Thick Foam Generation
 100% Bleach Stable
 Biodegradable Surfactants & Detergents



Color	Odor	pH	Physical State	DOT	Dilution
Green	Pine	11.61	Liquid	Not Regulated	Concentrate

LEMON SCENTED BLEACH ENHANCER & HOUSE WASH

Lemon Dancer 20332

Biodegradable surfactants
 Bleach stable
 Odor mask
 Foam-generating
 Pleasant lemon scent



Color	Odor	pH	Physical State	DOT	Dilution
Yellow	Lemon	10.5	Liquid	Not Regulated	Concentrate

SKU	NAME	CATEGORY	COLOR	ODOR	pH	PHYSICAL STATE	DOT	DILUTION
53070	Apple Surf	Apple Scented Bleach Additive	Green	Apple	8.5	Liquid	Not Regulated	Concentrate
53000	Bleach - 12.5% Solution	12.5% Bleach Solution	Clear	Bleach	13 - 14	Liquid	Hazardous	Concentrate
20279	Bleach Add	Orange Scented Bleach Enhancer & House Wash	Orange	Citrus	8 - 9	Liquid	Not Regulated	Concentrate
20340	Cherry Surf	Cherry Scented Bleach Additive	Red	Cherry	9 - 10	Liquid	Not Regulated	Concentrate
53045	Roof Dancer	Bleach Thickener and Roof Cleaner	Clear	Characteristic	9	Liquid	Not Regulated	Concentrate



Interesting products that don't fit into broad categories, but you don't want to miss

LIME & MINERAL SCALE REMOVER

Lime Be Gone 16400

Safe to use
Biodegradable
No harsh acids



Color	Odor	pH	Physical State	DOT	Dilution
Clear	Odorless	<2.2	Liquid	Not Regulated	Concentrate

ACID DESCALER

Super Coil Descaler 21185

Inhibited acid formulation
Non-fuming
Non-etching



Color	Odor	pH	Physical State	DOT	Dilution
Red	Odorless	<=1	Liquid	Hazardous	Ready to Use

COLOR INDICATING BATTERY CLEANER

Battery Cleaner & Acid Neutralizer 72194

Safe To Handle And Easy To Use
Neutralizes Battery Acid
Changes When Surface Is Neutralized
Non-Flammable • Non-Pressurized



Color	Odor	pH	Physical State	DOT	Dilution
Orange	Characteristic	8	Liquid	Not Regulated	Ready to Use

FORESTRY EQUIPMENT CLEANER & SAP REMOVER

EASY Sap & Pitch Remover 74750

Cleans pitch, oil and grease on equipment in: Sawmills, Planer Mills, Plywood Mills, Veneer Mills, Pulp Mills



Color	Odor	pH	Physical State	DOT	Dilution
Green	Odorless	13+	Liquid	Hazardous	Concentrate

SKU	NAME	CATEGORY	COLOR	ODOR	pH	PHYSICAL STATE	DOT	DILUTION
12400	Boat Brite	Boat, Trailer & Vehicle Wash	Clear	Characteristic	>13	Liquid	Not Regulated	Concentrate
16340	Descaler	Lime & Mineral Scale Remover	Clear	Acerbic	<=1	Liquid	Hazardous	Concentrate
16525	Marine Salt Neutralizer	Marine Salt Neutralizer	Orange	Characteristic	<3	Liquid	Not Regulated	Concentrate
11161	Non-Acid Aluminum Coil Cleaner	Safe Coil Cleaner	Violet	Odorless	10	Liquid	Not Regulated	Concentrate



ITD started with truck wash, and we remain an industry leader after more than 30 years. We have everything you need to build your truck wash detergent business.

PREMIUM POLISHED ALUMINUM CLEANER

Aluma Dog 16436

Perfect for two-step application
Safe on polished aluminum
Highly concentrated



Color	Odor	pH	Physical State	DOT	Dilution
Blue	Ascerbic	<=1	Liquid	Hazardous	Super Concentrate

POLISHED ALUMINUM CLEANER

Mirror Finish Brightener 16505

Polished aluminum safe
Removes oxidation
Highly concentrated
No harsh acids



Color	Odor	pH	Physical State	DOT	Dilution
Green	Odorless	<2	Liquid	Hazardous	Super Concentrate

PREMIUM ALUMINUM BRIGHTENER

Aluma Brite 16220

Highly dilutable
Leaves aluminum surfaces sparkling
HydroFluoric + Phosphoric blend



Color	Odor	pH	Physical State	DOT	Dilution
Light Straw	Characteristic	<=1	Liquid	Hazardous	Super Concentrate

PREMIUM ALUMINUM BRIGHTENER

H.D.A.B Plus 16100

Highly dilutable
Leaves aluminum surfaces sparkling
HydroFluoric + Sulfuric blend



Color	Odor	pH	Physical State	DOT	Dilution
Light Straw	Odorless	<=1	Liquid	Hazardous	Super Concentrate

SKU	NAME	CATEGORY	COLOR	ODOR	pH	PHYSICAL STATE	DOT	DILUTION
16510	#1a Conc.	Polished Aluminum Cleaner	Aqua Blue	Characteristic	<2	Liquid	Hazardous	Super Concentrate
11435	AC-102	Polished Aluminum Cleaner	Clear	Characteristic	<2	Liquid	Not Regulated	Concentrate
16720	Aluminum Weld Cleaner & Brightener	Aluminum Weld Cleaner & Brightener	Light Straw	Acerbic	<=1	Liquid	Hazardous	Concentrate
16224	Aluminum Wheel Cleaner & Brightener	Aluminum Wheel Cleaner & Brightener	Light Straw	Characteristic	<=1	Liquid	Hazardous	Concentrate
11660	Citric Aluminum Cleaner	Polished Aluminum Cleaner	Orange	Odorless	1.7-2.4	Liquid	Not Regulated	Super Concentrate
16990	i O Silver Shine	Premium Polished Aluminum Cleaner	Clear	Characteristic	<=1	Liquid	Hazardous	Concentrate
16515	Neutra Salt EFD	Road Salt Neutralizer	Orange	Odorless	<3	Liquid	Not Regulated	Concentrate
16921	Triple Brite 21 conc.	Heavy Duty Premium Aluminum Brightener	Blue	Odorless	<=1	Liquid	Hazardous	Super Concentrate

ITD started with truck wash, and we remain an industry leader after more than 30 years. We have everything you need to build your truck wash detergent business.

CARNAUBA WAX + SURFACE PROTECTANT + WATERLESS CLEANER

Shield & Shine 38300

Lasting Protection From The Harsh Elements Causes Beading & Runoff Of Rain And Snow
Reduces Soil Deposition
UV Inhibitors Protect Paint From Harsh Rays
Super Concentrated For Maximum Economy



Color	Odor	pH	Physical State	DOT	Dilution
Straw	Banana	5.19	Liquid	Not Regulated	Super Concentrate

PREMIUM AGGRESSIVE BROWN TRUCK WASH

Power Brite 11110

Premium aggressive brown truck wash
Does not require brushing
Highly dilutable
Paint and aluminum safe
USDA approved



Color	Odor	pH	Physical State	DOT	Dilution
Dark Brown	Odorless	>=13	Liquid	Hazardous	Super Concentrate

WINTER TRUCK WASH & SALT REMOVER

Salt Shaker 12500

Heavy Duty Truck Wash
Road Salt Remover
Corrosion Inhibitor
Carnauba Wax Protection
High Foam Profile



Color	Odor	pH	Physical State	DOT	Dilution
Dark Red	Indiscernible	>=13	Liquid	Hazardous	Super Concentrate

DUAL PURPOSE TRUCK WASH + DEGREASER

T&D Dual Purpose 22223

Dual purpose minimizes & simplifies inventory
Does not require brushing
Safe on paint and polished aluminum
High foam profile



Color	Odor	pH	Physical State	DOT	Dilution
Green	Odorless	12.88	Liquid	Not Regulated	Super Concentrate

SKU	NAME	CATEGORY	COLOR	ODOR	pH	PHYSICAL STATE	DOT	DILUTION
11210	Atlas	Safe Economy Truck Wash	Aqua Blue	Characteristic	>12.5	Liquid	Not Regulated	Concentrate
18021	Big Red Truck Wash Powder	Alkaline Truck Wash Powder	Red Powder	Characteristic	N/A	Powder	Not Regulated	NA
11420	Big Truck Brite	Safe Hard Water Truck Wash	Blue	Characteristic	12.92	Liquid	Not Regulated	Super Concentrate
55710	Booster	Foaming Detergent Additive	Light Straw	Odorless	2 - 4	Liquid	Not Regulated	Super Concentrate
22444	Bug Thriller	Bug Remover & Vehicle Cleaner	Pink	Ammonia	12.0-12.5	Liquid	Not Regulated	Concentrate
11114	Power Brite 2001 (sc)	Premium Aggressive Brown Truck Wash - Super Conc	Dark Brown	Odorless	>=13	Liquid	Hazardous	Super Concentrate
11115	Power Brite QS	Reclamation Detergent	Dark Brown	Characteristic	13+	Liquid	Hazardous	Super Concentrate
14240	Resolve M-2	Reclamation Detergent	Clear	Odorless	13.0	Liquid	Not Regulated	Concentrate
11215	Sun Brite	Safe Premium Truck Wash	Light Straw	Characteristic	13+	Liquid	Not Regulated	Concentrate
38500	TruckGuard	Premium Wax Additive	White	Odorless	7.0	Liquid	Not Regulated	Concentrate
11310	Truck-N-Tuff (TNT) (sc)	Super Concentrated Hard Water Truck Wash	Clear	Odorless	13.24	Liquid	Not Regulated	Super Concentrate
58750	Universal Foamer	Foaming Detergent Additive	Clear	Odorless	6 - 8	Liquid	Not Regulated	Super Concentrate



Two Step truck washing is a major time saver and must have solution. We have what you need for polished and non-polished surfaces.

**POLISHED SERIES
STEP 1 ACID DETERGENT
1 MAKES 4**

Aluma Dog 16436

Perfect for two-step application
Safe on polished aluminum
Highly concentrated



Color	Odor	pH	Physical State	DOT	Dilution
Blue	Ascerbic	<=1	Liquid	Hazardous	Super Concentrate

**POLISHED SERIES
STEP 2 ALKALINE DETERGENT
1 MAKES 4**

T&D Dual Purpose 22223

Dual purpose & simplifies inventory
Does not require brushing
Safe on paint and polished aluminum
High foam profile



Color	Odor	pH	Physical State	DOT	Dilution
Green	Odorless	12.88	Liquid	Not Regulated	Super Concentrate

**POWER SERIES
STEP 1 ACID DETERGENT
1 MAKES 4**

H.D.A.B Plus 16100

Highly dilutable
Leaves aluminum surfaces sparkling
HydroFluoric + Sulfuric blend



Color	Odor	pH	Physical State	DOT	Dilution
Light Straw	Odorless	<=1	Liquid	Hazardous	Super Concentrate

**POWER SERIES
STEP 2 ALKALINE DETERGENT
1 MAKES 4**

Power Brite 11110

Premium aggressive brown truck wash
Does not require brushing
Highly dilutable
Paint and aluminum safe
USDA approved



Color	Odor	pH	Physical State	DOT	Dilution
Dark Brown	Odorless	>=13	Liquid	Hazardous	Super Concentrate

**SUPER CONC SERIES
STEP 1 ACID DETERGENT**

Aluma Brite Super Conc 16210

Pail makes 100 gallons
Leaves aluminum surfaces sparkling
HydroFluoric + Phosphoric blend



Color	Odor	pH	Physical State	DOT	Dilution
Light Straw	Characteristic	<=1	Liquid	Hazardous	Super Concentrate

**SUPER CONC SERIES
STEP 2 ALKALINE DETERGENT**

Power Brite Super Conc 11114

Pail makes 110 gallons
Premium aggressive brown truck wash
Does not require brushing



Color	Odor	pH	Physical State	DOT	Dilution
Dark Brown	Odorless	>=13	Liquid	Hazardous	Super Concentrate

POLICIES — ORDERS/SHIPPING ETC.

Order Minimums

Stock items (ITD or Private Label)

- (20) 12 × 32 oz. quart cases
- (4) 4 × 1 gallon cases
- (3) 5 gallon pails

Custom blends / non-stock items

- Drums 220 + gallons (4 × 55 gal, 8 × 30 gal, 11 × 20 gal, 15 × 15 gal)
- (36) pails = 1 pallet
- (48) 4 × 1 gallon cases = 1 pallet
- (48) 12 × 32 oz. cases = 1 pallet

Customer Web Portal

Once your account is processed and approved, you will receive a login for your back-end access on ITD's website. This portal will be of immense value to you as you build your relationship with us, and includes features such as:

- Current price list
- Product SDSs
- Product marketing materials
- Key contacts and reference to procedures

Packaging & Raw Materials

ITD provides standard chemical packaging items for sale a la carte. Many of these common items are listed on the last page of the stock price list. If you need a packaging item not listed, please contact customer service. We also sell bulk and small packaged chemical raw materials. Inquire for pricing and availability.

Private Labeling

See separate document for details and requirements. Minimums under private label are the same as under ITD label. ITD will also private label marketing materials for your use. Private label program comes with private labeled SDSs.

Ordering

All orders should be sent in writing to admin@itdinc.biz. ITD provides a stock order form available on your web portal, to be filled out (by hand or spreadsheet) and emailed for ease of use. You may also record your order in the body of an email, with proper item identification. If you must place an order over the phone, a real person will always take your order with a smile, but please have correct item names and numbers to communicate.

Item numbers

It is important to know and communicate your item numbers, particularly if you are a private label customer. ITD operates using a 5 number item code plus a packaging code. 12345-55 (12345 = item code; 55 = packaging code) Common packaging codes are as follows:

- 330 = 330 gallon tote
- 275 = 275 gallon tote
- 55, 30, 20, 15 = X gallon drum
- 1DK, 5DK, 10DK = X drum kits
- 05, 06 = 5 and 6 gallon pail
- 01cs = 4 × 1 gallon case (ITD does not sell single gallons)
- -12-32 = 12 × 32 oz quart case

Concentration Terminology

- Ready to Use (RTU). Designed to be sold to the end customer as is, with little if any further dilution directions.
- Concentrate (Conc). Designed to be sold to the end customer as is, but with significant further dilution directions.
- Super Concentrate (SC). Designed to be "cut" or diluted by the distributor prior to selling to the end customer as a Concentrate with further dilution directions.
- Drum Kit (DK) While this can mean a few different things depending on the product type, in general it means that ITD ships the components of the product without water, for the distributor to blend on site before resale.

Payment Terms

Please be respectful of our payment terms. All invoices are due 30 days from the date of invoice. Accounts with any balance older than 60 days will be put on hold until the account is made current. Accounts with any balance older than 90 days will move to COD. Accounts with any balance older than 120 days will be sent to collections.

ITD prefers to be paid via ACH if possible. Contact the office to set up ACH. Invoices detail ITD's PO box for submission of payment by check. If you desire to pay with credit card, call the office and it will be taken over the phone with a 3.5% transaction fee.

Product Pricing

A current stock price list is always available in your online portal. While we will announce broad pricing changes, we reserve the right to change product pricing on a daily basis according to raw material cost fluctuation. Please always check your price list before ordering. Changes to custom item pricing are communicated directly to you via email if and when changed, for any items you have purchased in the preceding 12 months. Any items that have not been purchased recently will be quoted upon request.

